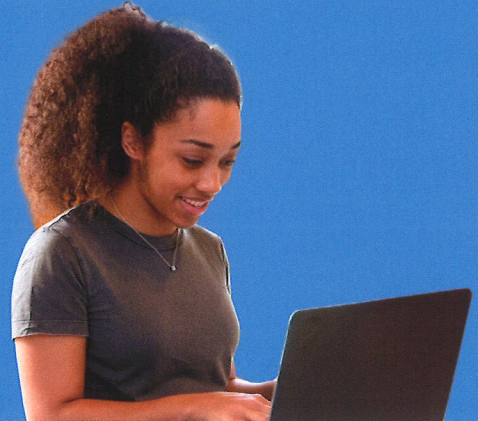


Understanding SAT[™] Scores



Accessing Scores

Taking the SAT with Essay is an important step toward your future after high school to college, career, or wherever your path leads.

How to get your scores:

- A PDF score report is available from your school and includes in-depth information about your performance.
- If you provided a cell phone number when you took the SAT, you can download the BigFuture[®] School mobile app, and you'll get a text message telling you when your scores are available to view.
- As always, if you're age 13 or older, you may use a personal College Board student account to view additional insights online.

Score Summary

When viewing your SAT scores, the first thing you'll see is your total score, which is a combination of your scores on the Reading and Writing section and the Math section.

Understanding scores:

- All possible scores:
 - 400-1600 for total score
 - 200-800 for section scores
- Your score range: This range shows how much your scores would likely vary if you took a different administration of the test under identical conditions. From recent administrations of the SAT, these ranges are approximately:
 - Total: ± 40 points
 - Reading and Writing: ± 20 points
 - Math: ± 30 points

- Percentile comparisons: The percentile comparison helps you understand the percentage of students scoring the same as or lower than you. For example, 75th percentile means that your score was the same as or higher than scores earned by 75% of other students.

Learn more about understanding and using scores: [Understanding Scores for Students/Families](#).

Knowledge and Skills

In the Knowledge and Skills section, you'll see a graphic that shows your performance on each of the eight content areas measured on the SAT. There are four content areas in Reading and Writing, and four in Math.

For each content area, you'll see:

- The approximate number of questions in the content area.
- The percentage of the section covered by that area (e.g., 12–14 questions would be about 26% of the Reading and Writing section).
- A visual indication of how you performed in each content area.

You can use this section to learn more about your strengths and areas that need improvement.

Discover Growing Careers

Your score report may have you thinking about what comes next. Career Insights Snapshot is a new addition to the PDF score report and includes a list of growing careers in your state that need skills like yours. Please note that this list DOES NOT SHOW CAREER RECOMMENDATIONS or the only careers you should consider. The list can show you more about what careers are out there and key aspects of a job, like whether it requires a college degree.

Each job on your score report:

- Is growing in your state, meaning there are jobs available.
- Pays a living wage, because we know salary is important.
- Requires more education after high school, in some cases college, but not in all.
- Connects to the math, reading, and writing skills you demonstrated on the SAT, because every job has a set of measurable skills.

All of this might make you curious about a career on the list—or maybe none of the options feels like a great fit. That's okay! The insights can help you start thinking about what you might want to do after high school.

To learn more about your options and careers that include your interests, [take the short career quiz](#).

BigFuture School

In the BigFuture School mobile app, you'll see much of the same information available on the score report PDF. You'll also have access to additional resources about scholarships, financial aid, and planning for college or careers. The BigFuture School app is available to domestic students age 13 and over.

Learn more at satsuite.org/bigfutureschool.



View a video walk-through of the score report

SAT Sample Score Report

Name: **Eli Essay-Writer**
 Grade: **11**
 Test administration: **SAT School Day Spring 2024**
 Tested on: **Mar. 18, 2024**

Your Score Report

SAT Scores

TOTAL SCORE
1120
Score Range: 1000-1160
Average Score (all test-takers): 1100

SECTION SCORES

Reading and Writing
620
Your Score Range: 598-650
Average Score (all test-takers): 600

Math
500
Your Score Range: 470-530
Average Score (all test-takers): 530

*Percentiles represent the percent of 11th grade test takers from the past 3 years who scored the same as or below you.
Score range: This is the range of scores you could possibly get if you took the SAT Multiple times on different days.

Knowledge and Skills

View your performance across the 8 content domains measured on the SAT.

<p>Reading and Writing</p> <p>Information and Ideas <small>(26% of test section, 12-14 questions)</small></p> <p>Craft and Structure <small>(20% of test section, 13-15 questions)</small></p> <p>Expression of Ideas <small>(20% of test section, 8-12 questions)</small></p> <p>Standard English Conventions <small>(26% of test section, 11-15 questions)</small></p>	<p>Math</p> <p>Algebra <small>(42.5% of test section, 16-18 questions)</small></p> <p>Advanced Math <small>(20% of test section, 7-9 questions)</small></p> <p>Problem Solving & Data Analysis <small>(25% of test section, 9-11 questions)</small></p> <p>Geometry & Trigonometry <small>(12.5% of test section, 4-6 questions)</small></p>
---	---

ESSAY SCORES

Reading	Analysis	Writing
6 2-8	4 2-8	5 2-8

STATE PERFORMANCE

View your performance levels, defined by your state, for each applicable section of the test.

Reading and Writing: Level 3 Proficient
Math: Level 3 Proficient

Career Insights Snapshot

Your skills are in demand! Consider exploring these growing careers in your state that need skills like yours. **These are examples, not recommendations, to help jump-start your career exploration.**

INTEREST AREA*	CAREER EXAMPLES	MEDIAN YEARLY INCOME IN ML	NUMBER OF JOBS IN MP	JOB GROWTH	MOST COMMON EDUCATION LEVEL
Doers	Industrial Machinery Mechanics	\$59,000	25,600	+10%	Certificate
Persuaders	Wind Energy Operations Managers	\$63,000	24,300	+10%	Associate degree
Creators	Graphic Designers	\$46,000	8,900	+9%	Bachelor's degree
Helpers	Critical Care Nurses	\$77,000	107,000	+9%	Bachelor's degree
Thinkers	Mechanical Engineers	\$92,000	33,900	+3%	Bachelor's degree
Organizers	Treasurers and Financial Controllers	\$124,000	21,100	+12%	Bachelor's degree

*For more information about career insights, including interest areas, visit satsuite.org/whatsnext.
 *Number of reflects the expected number of new job openings in 2028. Percentage reflects the expected growth in new job openings between 2023 and 2028.
 Data source: Lightcast.io

Don't see a career you're interested in?
Learn more about almost 1,000 careers for free.

satsuite.org/whatsnext

© 2024 College Board.